

**NEVIS DG** south

**TWO BEDROOM UNIT + STUDY**

143sqm (gross external area)



**GOLDEN VIEW**  
LIFESTYLE VILLAGE



## SPECIFICATION

### Bathroom & Ensuite

- Extractor fan/heat/light - Heated towel rail
- Shower slide and mixer, designer glass sides & door
- Vanity with mirror, mirror demister
- Under floor heating (wall heater as optional extra)

### Bedrooms

- Phone & TV connections
- Wall heater in bedrooms (optional extra)
- Wardrobe organisers

### Drapes and Blinds

### Flooring

- Carpet (living, dining & bedrooms)
- Tile (entry, WC & bathroom)
- Vinyl (kitchen)
- Concrete (garage, laundry, terrace & service court)

### Heating

- Heatpump
- Fireplace (optional extra)

### Garage

- Double (carpet as optional extra)
- Automatic garage door with remotes
- Laundry (with tub)

### Kitchen

- Dishwasher (Fisher & Paykel single drawer)
- Ceramic cooktop - Glass splashback
- Rangehood - Wastemaster
- Wall oven

### WC

- Wash hand basin

### Study Room

### Storage

- In garage & hall

### Extras included with Villa

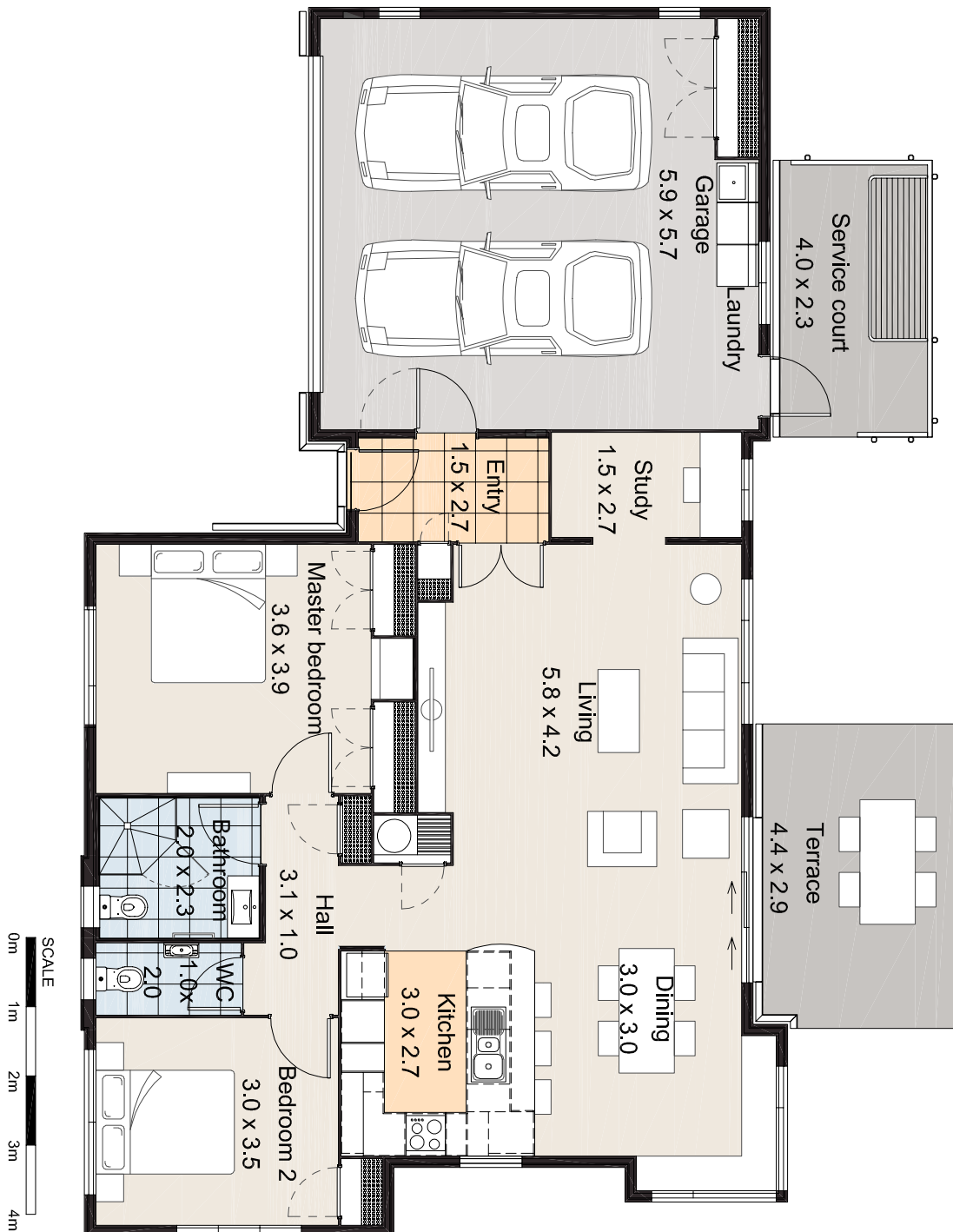
- Emergency call & audible smoke detectors
- Inactivity/security detector
- Front door viewer and door bell
- Phone & TV connections in living areas
- Landscaping & planted gardens
- Clothesline
- Window security stays



## TWO BEDROOM UNIT + STUDY

143sqm (gross external area)

GOLDEN VIEW  
LIFESTYLE VILLAGE



### Notes:

- Patio layout is for reference only. Please refer to construction drawing for details.
- Usable space does not include cupboards.
- Plan is subject to final design and council approvals. Villa styles, location and grounds may be subject to change.